

# TDAVI-6 RTAA MODEL

GALVANNEAL DROP BOX 6 WAY  
DRUM LOUVER FACE DIFFUSER,  
SQUARE NECK FOR 7000 CFM



- Specially designed to be applied on the air condition distribution on industrial warehouses and shopping malls.
- Connected directly to the output branches of the high-speed ducts.
- Its great height installation and near the columns reduce the interference with the lifts and any other equipment's for material handling.
- Easily removable to allow the occasional movement of heavy equipment

**New design**  
**! SAME PERFORMANCE**  
**BEST PRICES !**

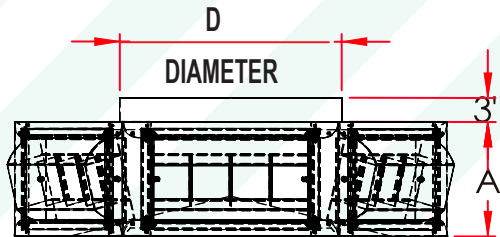
## CONSTRUCTION:

Galvanneal steel structure with RTAA model. The inside of the cabinet is covered with insulating and acoustical material properly treated to avoid its erosion. Has a **CONE DEFLECTOR** that diverts the air towards the diffusers for a higher performance.

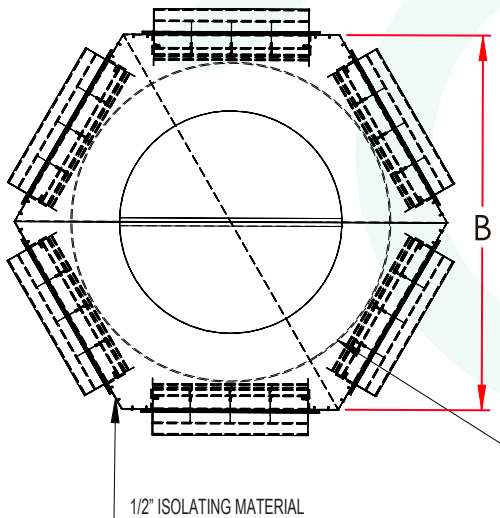
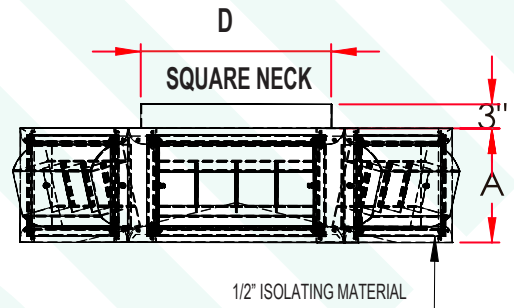
## FINISH:

Standard white Anodic acrylic paint. Other colors available.

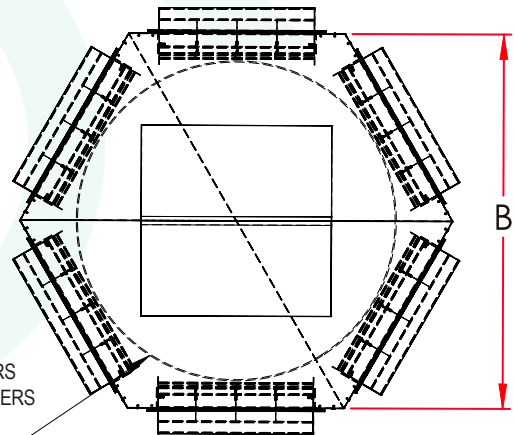
## Dimensional Data



**SIDE VIEW**



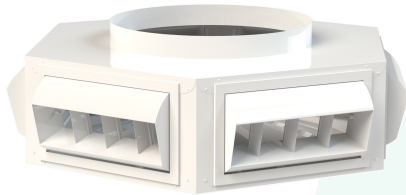
**TOP VIEW**



\*CONE DEFLECTOR THAT DIVERS THE AIR TOWARDS THE DUFFUSERS FOR A HIGHER PERFORMANCE

# TDAVI-6 RTAA MODEL

## DIMENSIONS AND PERFORMANCE



**TDAVI-6CR  
RTAA**

MODEL	DIAMETER	A HIGH	B WIDTH	GRID SIZE	NOMINAL PCM	TONS	THROW <sup>150, 100, 50 fpm</sup>	NC	VEL. PRES. In H <sub>2</sub> O	TOTAL PRES. In H <sub>2</sub> O @ deflection
TDAVI-6CR 17.5	28"	12"	47"	20"X 8"	7,000	17.5	32-42-57	39	0.0623	0.426
TDAVI-6CR 20	28"	14.5"	47"	20"X 10"	8,000	20	32-46-65	41	0.0504	0.28
TDAVI-6CR 22.5	28"	16"	47"	20"X 12"	9,000	22.5	40-51-68	36	0.04	0.217
TDAVI-6CR 25	28"	16"	47"	20"X 12"	10,000	25	42-53-72	38	0.0504	0.26
TDAVI-6CR 30	32"	16"	64"	30"X 12"	12,000	30	45-56-77	36	0.0399	0.206
TDAVI-6CR 40	40"	16"	74.5"	36"X 12"	16,000	40	50-62-86	37	0.0305	0.16
TDAVI-6CR 50	40"	19"	74.5"	36"X 15"	20,000	50	73-89-127	38	0.0504	0.22
TDAVI-6CR 57.5	46"	19"	81.5"	40"X 15"	23,000	57.5	75-91-129	39	0.0504	0.22
TDAVI-6CR 67.5	48"	19"	99"	50"X 15"	27,000	67.5	77-95-134	40	0.05	0.20

MODEL	DIAMETER	A HIGH	B WIDTH	GRID SIZE	NOMINAL PCM	TONS	THROW <sup>150, 100, 50 fpm</sup>	NC	VEL. PRES. In H <sub>2</sub> O	TOTAL PRES. In H <sub>2</sub> O @ deflection
TDAVI-6CC 17.5	24"	12"	47"	20"X 8"	7,000	17.5	32-42-57	39	0.0623	0.426
TDAVI-6CC 20	24"	14.5"	47"	20"X 10"	8,000	20	32-46-65	41	0.0504	0.28
TDAVI-6CC 22.5	24"	16"	47"	20"X 12"	9,000	22.5	40-51-68	36	0.04	0.217
TDAVI-6CC 25	24"	16"	47"	20"X 12"	10,000	25	42-53-72	38	0.0504	0.26
TDAVI-6CC 30	32"	16"	64"	30"X 12"	12,000	30	45-56-77	36	0.0399	0.206
TDAVI-6CC 40	36"	16"	74.5"	36"X 12"	16,000	40	50-62-86	37	0.0305	0.16
TDAVI-6CC 50	36"	19"	74.5"	36"X 15"	20,000	50	73-89-127	38	0.0504	0.22
TDAVI-6CC 57.5	40"	19"	81.5"	40"X 15"	23,000	57.5	75-91-129	39	0.0504	0.22
TDAVI-6CC 67.5	44"	19"	99"	50"X 15"	27,000	67.5	77-95-134	40	0.05	0.20



**TDAVI-6CC  
RTAA**

### NOTES:

Throws are based on terminal speeds (Vt) of 150, 100 and 50 Feet / Min. (Ppm) with the help of a ceiling or false ceiling that allows the "Coanda Effect", under isothermal conditions and zero deflection.